

# ACCESSORIES

## SMB4~SMB12



하나 이상의 진공컵을 사용할 경우에는 진공회로의 파이프구멍 크기를 유지하는것이 중요하다.

SOLVAC매니폴드를 통해 하나의 대형BSP 연결부위에 복수의 연결이 가능하다. 매니폴드는 컴팩트하고 대부분의 어플리케이션에 적합 하도록 다양한 형태가 있다.

It's important to maintain pipe bore size on vacuum circuits when using more than one suction cup.

The SOLVAC manifolds enable multiple connection to be made back to one common large BSP connection. The manifolds are very compact and are available in a number of configurations to suit most application.

Order No.

### SMB ① - ② - ③

① 분배기포트/ Disributor port

4	: 4 EA
6	: 6 EA
8	: 8 EA
10	: 10 EA
12	: 12 EA

② 나사규격 / Thread size

M	: M5 (Standards)
B	: Ø4, Ø6 호스피팅/ Standards
F	: Ø4, Ø6 원티치피팅/One touch fitting

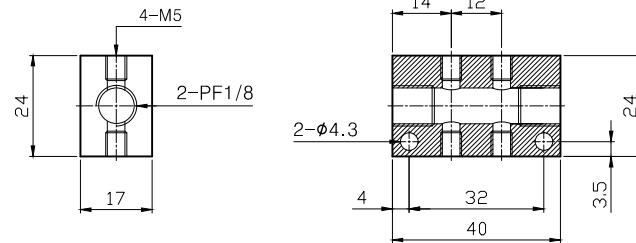
③ 호스지름 / Hose dia

4	: Ø4 외부지름/Outer dia
6	: Ø6 외부지름/Outer dia

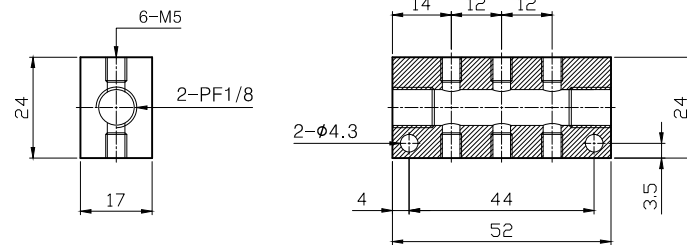
# DIMENSION

## Manifolds SMB-M

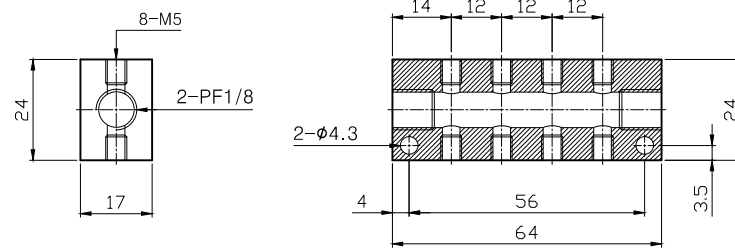
SMB-4M



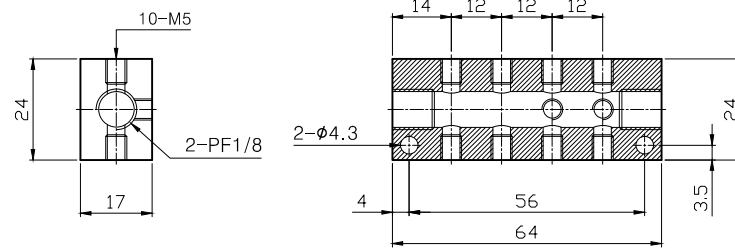
SMB-6M



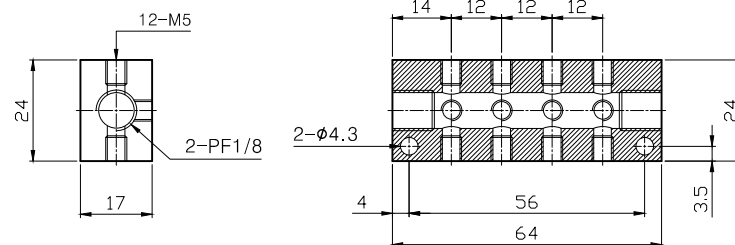
SMB-8M



SMB-10M



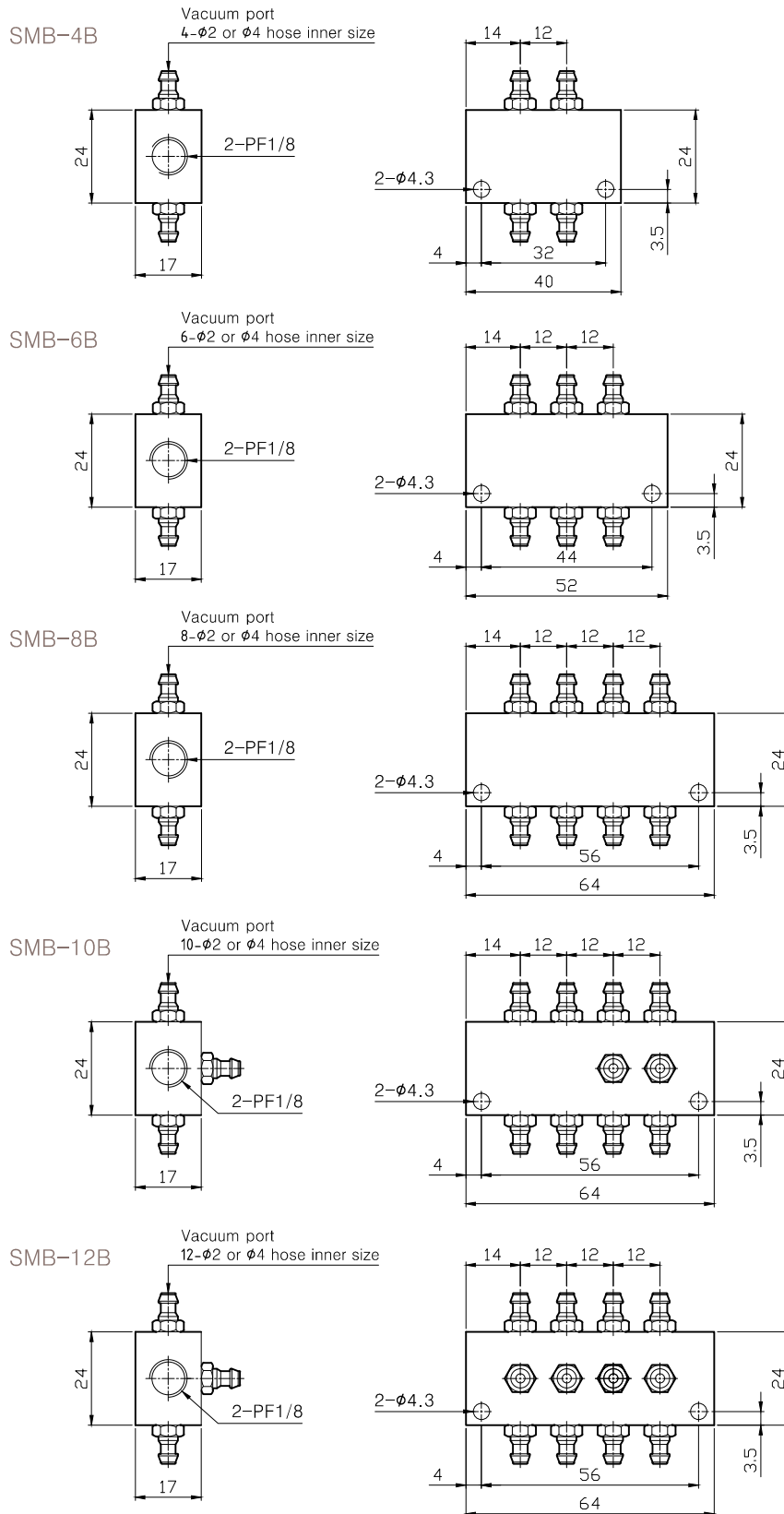
SMB-12M



※품질 향상을 위해 예고없이 사양이 변경될 수 있음.  
Specifications subject to change without notice.

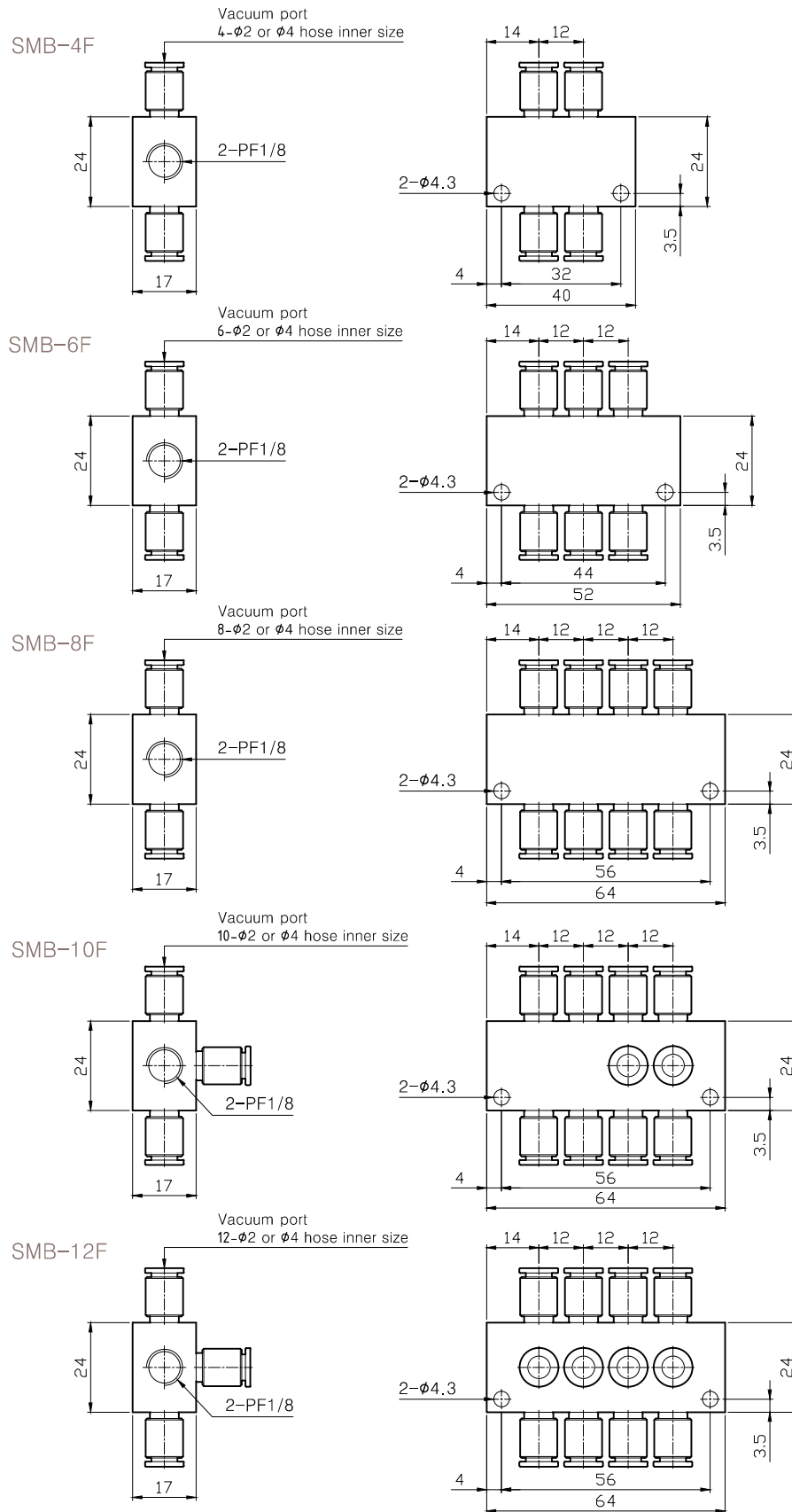
# DIMENSION

## Manifolds SMB-B



# DIMENSION

## Manifolds SMB-F



※품질 향상을 위해 예고없이 사양이 변경될 수 있음.  
Specifications subject to change without notice.